

PRELIMINARY ISSUE - NOT FOR MANUFACTURE

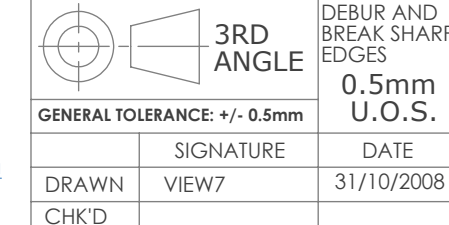
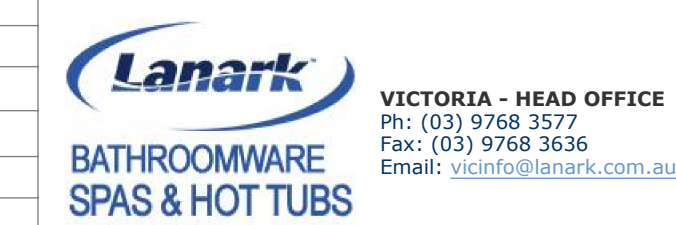
APPROVED FOR	SIGNED	DATE
QUOTATION		
MATL ORDER		
MANUFACTURE		
REWORK		

REV.	DESCRIPTION	DATE	APPROVED
REVISION TABLE			

#	NOTES
1	
2	
3	
4	
5	
6	
7	
8	
9	
10	
11	

PROJECT	CLIENT
VICTORIA - HEAD OFFICE PH: (03) 9768 2077 FAX: (03) 9768 3036 EMAIL: <a href="mailto:vc@lanark.com.au">vc@lanark.com.au</a>	JANICE 1500
DESIGNER: V774	DWG NO: V774-16
DATE: 31/10/2008	SHEET SCALE: 1:4

GENERAL TOLERANCE	3RD ANGLE	DEBUR AND BREAK SHARP EDGES	CUSTOMER
±0.5mm U.O.S.			JANICE 1500
			DWG NO: V774-16
			SHEET SCALE: 1:4
			SHEET 1 OF 1



Design by View7

UOS ALL FABRICATIONS TO BE FULLY WELDED WITH CORRECT PREPARATION OF WELD SURFACES INCLUDING REVELLED EDGES ETC

ALL DIMENSIONS GIVEN UNLESS OTHERWISE SPECIFIED ARE THE SOLE PROPERTY OF LANARK AND MAY NOT BE COPIED OR REPRODUCED WITHOUT PERMISSION